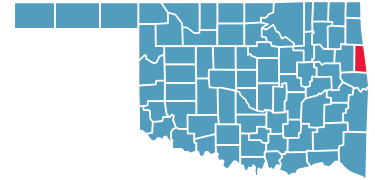




oklahoma's: county benchmarks oklahom
county benchmarks oklahoma's: county benc
arks oklahoma's: county benchmarks oklah

ADAIR COUNTY

County Seat: **Stilwell**



Number of Children (2005): **6,235**

Number of Poor Children (2004): **1,656**

Children are **28.4%** of the county population

Child Poverty Rate: **27.2%**

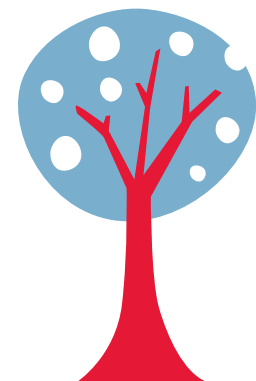
Economic Cluster: **#5, Poorest**

Indicator	Base Data	-	Worsened	Improved	+	Recent Data	Rank
BIRTHWEIGHT							
Low Birthweight (<5.5lbs)	5.8% of live births, 1994-96	-49.1%				8.6% of live births, 2003-05	59
Very Low Birthweight (<3 lbs, 5oz)	1.2% of live births, 1994-96	-39.3%				1.6% of live births, 2003-05	67
BIRTHS TO TEENS							
Births to Young Teens (ages 15-17)	63.5/1,000 girls 15-17, 1994-96				29.1%	45.0/1,000 girls 15-17, 2003-05	74
Births to Older Teens (ages 18-19)	189.6/1,000 girls 18-19, 1994-96				9.9%	170.8/1,000 girls 18-19, 2003-05	77
Births to Teens (ages 15-19)	107.7/1,000 girls 15-19, 1994-96				15.1%	91.4/1,000 girls 15-19, 2003-05	77
CHILD ABUSE & NEGLECT							
	23.6 confirmed/1,000 children, FY 1995-97	-3.3%				24.4 confirmed/1,000 children, FY 2004-06	59
HIGH SCHOOL DROPOUTS							
	4.9% youth <age 19, SY 2001/02-2003/04	-16.6%				5.7% youth <age 19, SY 2003/04-2005/06	76
VIOLENT CRIME ARRESTS							
	95.7/100,000 youths 10-17, 1994-96	-19.5%				114.3/100,000 youths 10-17, 2003-05	38
MORTALITY							
Infant Mortality (<age 1)	9.8/1,000 live births, 1994-96				29.6%	6.9/1,000 live births, 2003-05	34
Child Death (ages 1-14)	43.2/100,000 children 1-14, 1994-96				20.1%	34.5/100,000 children 1-14, 2003-05	48
Teen Death (ages 15-19)	136.0/100,000 teens 15-19, 1994-96	-28.7%				175.0/100,000 teens 15-19, 2003-05	69
Child & Teen Death (ages 1-19)	68.3/100,000 youth 1-19, 1994-96	-4.4%				71.3/100,000 youth 1-19, 2003-05	64
ECONOMIC CLUSTER							
	212 Economic Index, 1994-96	-22.6%				260 Economic Index, 2003-05	70

■ state change ■ county change ### = zero base - cannot calculate change County Rank (1 = best) (77 = worst)
 Changes of more than 100%—positive or negative—are graphed with broken bar *Indicates a tie with at least one other county.

CHILDHOOD STRESS INDEX

Category / Indicator	Number	Rate	Rank
BIRTH / GENETIC / BIOLOGICAL			
Very Low Birthweight (2003-05)	6 avg annual	1.6%	67
Autism Reported on IEPs (ages 3-21, FFY 2005-07)	8 avg annual	1.3/1,000	27
ENVIRONMENTAL FACTORS			
Poverty (ages 0-17, 2004)	1,656	27.2%	67
Unemployment (2003-05)	n/a	7.0%	69
EXPOSURE TO TRAUMA			
FEMA Disaster Declarations (Nov 2000-Aug 2007)	6	1.0/1,000 children	52
Adverse Childhood Experiences (ACE Index, 2006/07 Kids Count)	56.8	n/a	73
ACCESS TO TREATMENT			
Untreated by DMHSAS, OJA or Medicaid (ages 9-17, FY 2005-06)			
Untreated Mentally Ill & Substance-Abusers	426 avg annual	64.4%	50*
Untreated Serious Emotional Disturbance	185 avg annual	45.0%	
Suicide (ages 5-24, 2003-05)	1 avg annual	10.3/100,000	57



Childhood Stress Rank

69

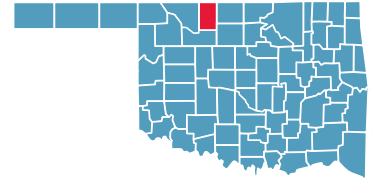
*Indicates a tie with at least one other county.

0.0%* or 0* indicates that, on average, services were provided to numbers of young clients which appear to serve all of the estimated need (prevalence) in the county



ALFALFA COUNTY

County Seat: Cherokee



Number of Children (2005): 932

Number of Poor Children (2004): 171

Children are 16.3% of the county population

Child Poverty Rate: 18.2%

Economic Cluster: #1, Wealthiest

Indicator	Base Data	-	Worsened	Improved	+	Recent Data	Rank
BIRTHWEIGHT							
Low Birthweight (<5.5lbs)	8.7% of live births, 1994-96				61.4%	3.4% of live births, 2003-05	1
Very Low Birthweight (<3 lbs, 5oz)	2.5% of live births, 1994-96				100.0%	0.0% of live births, 2003-05	1*
BIRTHS TO TEENS							
Births to Young Teens (ages 15-17)	14.7/1,000 girls 15-17, 1994-96	-23.3%				18.1/1,000 girls 15-17, 2003-05	18
Births to Older Teens (ages 18-19)	132.7/1,000 girls 18-19, 1994-96				57.1%	56.9/1,000 girls 18-19, 2003-05	7
Births to Teens (ages 15-19)	37.5/1,000 girls 15-19, 1994-96				11.6%	33.2/1,000 girls 15-19, 2003-05	9
CHILD ABUSE & NEGLECT							
	22.4 confirmed/1,000 children, FY 1995-97				7.9%	20.6 confirmed/1,000 children, FY 2004-06	52
HIGH SCHOOL DROPOUTS							
	0.4% youth <age 19, SY 2001/02-2003/04	-72.9%				0.6% youth <age 19, SY 2003/04-2005/06	3
VIOLENT CRIME ARRESTS							
	108.4/100,000 youths 10-17, 1994-96				38.7%	66.4/100,000 youths 10-17, 2003-05	19
MORTALITY							
Infant Mortality (<age 1)	12.4/1,000 live births, 1994-96				100.0%	0.0/1,000 live births, 2003-05	1*
Child Death (ages 1-14)	65.7/100,000 children 1-14, 1994-96	-41.8%				93.2/100,000 children 1-14, 2003-05	73
Teen Death (ages 15-19)	445.2/100,000 teens 15-19, 1994-96				100.0%	0.0/100,000 teens 15-19, 2003-05	1*
Child & Teen Death (ages 1-19)	168.1/100,000 youth 1-19, 1994-96				62.5%	63.0/100,000 youth 1-19, 2003-05	57
ECONOMIC CLUSTER							
	96 Economic Index, 1994-96				14.6%	82 Economic Index, 2003-05	16

■ state change

■ county change

= zero base - cannot calculate change

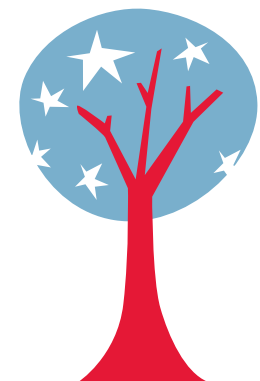
County Rank (1 = best) (77 = worst)

Changes of more than 100%—positive or negative—are graphed with broken bar

*Indicates a tie with at least one other county.

CHILDHOOD STRESS INDEX

Category / Indicator	Number	Rate	Rank
BIRTH / GENETIC / BIOLOGICAL			
Very Low Birthweight (2003-05)	0 avg annual	0.0%	1*
Autism Reported on IEPs (ages 3-21, FFY 2005-07)	0 avg annual	0.3/1,000	2
ENVIRONMENTAL FACTORS			
Poverty (ages 0-17, 2004)	171	18.2%	21
Unemployment (2003-05)	n/a	3.4%	13
EXPOSURE TO TRAUMA			
FEMA Disaster Declarations (Nov 2000-Aug 2007)	7	0.1/1,000 children	6
Adverse Childhood Experiences (ACE Index, 2006/07 Kids Count)	31.1	n/a	32
ACCESS TO TREATMENT			
Untreated by DMHSAS, OJA or Medicaid (ages 9-17, FY 2005-06)			
Untreated Mentally Ill & Substance-Abusers	76 avg annual	68.7%	64
Untreated Serious Emotional Disturbance	36 avg annual	51.8%	
Suicide (ages 5-24, 2003-05)	0 avg annual	0.0/100,000	1*



Childhood Stress Rank

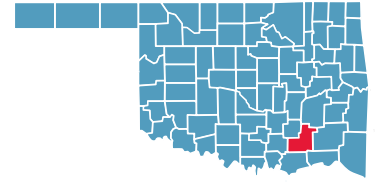
3

*Indicates a tie with at least one other county.

0.0%* or 0* indicates that, on average, services were provided to numbers of young clients which appear to serve all of the estimated need (prevalence) in the county

ATOKA COUNTY

County Seat: **Atoka**



Number of Children (2005): **3,096**

Number of Poor Children (2004): **811**

Children are **21.4%** of the county population

Child Poverty Rate: **26.4%**

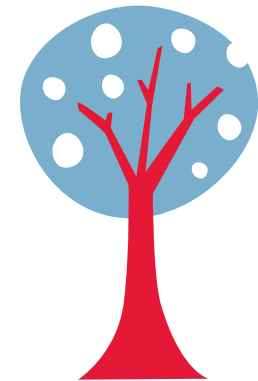
Economic Cluster: **#5, Poorest**

Indicator	Base Data	-	Worsened	Improved	+	Recent Data	Rank
BIRTHWEIGHT							
Low Birthweight (<5.5lbs)	7.4% of live births, 1994-96	-15.5%				8.6% of live births, 2003-05	60
Very Low Birthweight (<3 lbs, 5oz)	0.2% of live births, 1994-96	-353.9%				1.0% of live births, 2003-05	31
BIRTHS TO TEENS							
Births to Young Teens (ages 15-17)	37.8/1,000 girls 15-17, 1994-96				44.6%	20.9/1,000 girls 15-17, 2003-05	27
Births to Older Teens (ages 18-19)	114.9/1,000 girls 18-19, 1994-96	-3.1%				118.5/1,000 girls 18-19, 2003-05	58
Births to Teens (ages 15-19)	63.2/1,000 girls 15-19, 1994-96				8.3%	58.0/1,000 girls 15-19, 2003-05	40
CHILD ABUSE & NEGLECT							
	15.7 confirmed/1,000 children, FY 1995-97	-86.4%				29.2 confirmed/1,000 children, FY 2004-06	72
HIGH SCHOOL DROPOUTS							
	3.9% youth <age 19, SY 2001/02-2003/04				31.8%	2.6% youth <age 19, SY 2003/04-2005/06	41
VIOLENT CRIME ARRESTS							
	0.0/100,000 youths 10-17, 1994-96				###	178.6/100,000 youths 10-17, 2003-05	60
MORTALITY							
Infant Mortality (<age 1)	13.5/1,000 live births, 1994-96				39.5%	8.2/1,000 live births, 2003-05	47
Child Death (ages 1-14)	25.7/100,000 children 1-14, 1994-96	-63.7%				42.0/100,000 children 1-14, 2003-05	57
Teen Death (ages 15-19)	63.4/100,000 teens 15-19, 1994-96				44.4%	35.2/100,000 teens 15-19, 2003-05	8
Child & Teen Death (ages 1-19)	36.5/100,000 youth 1-19, 1994-96	-9.7%				40.1/100,000 youth 1-19, 2003-05	25
ECONOMIC CLUSTER							
	253 Economic Index, 1994-96	-5.9%				268 Economic Index, 2003-05	72

■ state change ■ county change ### = zero base - cannot calculate change County Rank (1 = best) (77 = worst)
 Changes of more than 100%—positive or negative—are graphed with broken bar *Indicates a tie with at least one other county.

CHILDHOOD STRESS INDEX

Category / Indicator	Number	Rate	Rank
BIRTH / GENETIC / BIOLOGICAL			
Very Low Birthweight (2003-05)	2 avg annual	1.0%	31
Autism Reported on IEPs (ages 3-21, FFY 2005-07)	5 avg annual	1.6/1,000	45
ENVIRONMENTAL FACTORS			
Poverty (ages 0-17, 2004)	811	26.4%	66
Unemployment (2003-05)	n/a	6.1%	60
EXPOSURE TO TRAUMA			
FEMA Disaster Declarations (Nov 2000-Aug 2007)	9	0.3/1,000 children	25
Adverse Childhood Experiences (ACE Index, 2006/07 Kids Count)	53.7	n/a	69
ACCESS TO TREATMENT			
Untreated by DMHSAS, OJA or Medicaid (ages 9-17, FY 2005-06)			
Untreated Mentally Ill & Substance-Abusers	117 avg annual	34.6%	9
Untreated Serious Emotional Disturbance	0* avg annual	0.0%*	1*
Suicide (ages 5-24, 2003-05)	0 avg annual	0.0/100,000	1*



Childhood Stress Rank

53

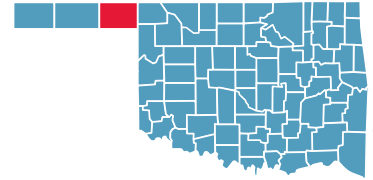
*Indicates a tie with at least one other county.

0.0%* or 0* indicates that, on average, services were provided to numbers of young clients which appear to serve all of the estimated need (prevalence) in the county



BEAVER COUNTY

County Seat: **Beaver**



Number of Children (2005): **1,288**

Number of Poor Children (2004): **198**

Children are **23.9%** of the county population

Child Poverty Rate: **15.4%**

Economic Cluster: **#1, Wealthiest**

Indicator	Base Data	-	Worsened	Improved	+	Recent Data	Rank
BIRTHWEIGHT							
Low Birthweight (<5.5lbs)	5.1% of live births, 1994-96	-26.4%				6.5% of live births, 2003-05	15
Very Low Birthweight (<3 lbs, 5oz)	1.1% of live births, 1994-96	-13.8%				1.3% of live births, 2003-05	54
BIRTHS TO TEENS							
Births to Young Teens (ages 15-17)	21.4/1,000 girls 15-17, 1994-96				4.8%	20.3/1,000 girls 15-17, 2003-05	23
Births to Older Teens (ages 18-19)	142.9/1,000 girls 18-19, 1994-96				54.8%	64.5/1,000 girls 18-19, 2003-05	14
Births to Teens (ages 15-19)	50.4/1,000 girls 15-19, 1994-96				25.7%	37.4/1,000 girls 15-19, 2003-05	14
CHILD ABUSE & NEGLECT							
	6.4 confirmed/1,000 children, FY 1995-97	-60.0%				10.2 confirmed/1,000 children, FY 2004-06	12
HIGH SCHOOL DROPOUTS							
	0.8% youth <age 19, SY 2001/02-2003/04				33.9%	0.5% youth <age 19, SY 2003/04-2005/06	2
VIOLENT CRIME ARRESTS							
	0.0/100,000 youths 10-17, 1994-96				###	48.1/100,000 youths 10-17, 2003-05	13
MORTALITY							
Infant Mortality (<age 1)	0.0/1,000 live births, 1994-96				###	4.3/1,000 live births, 2003-05	13*
Child Death (ages 1-14)	26.1/100,000 children 1-14, 1994-96				100.0%	0.0/100,000 children 1-14, 2003-05	1*
Teen Death (ages 15-19)	77.6/100,000 teens 15-19, 1994-96	-8.9%				84.5/100,000 teens 15-19, 2003-05	37
Child & Teen Death (ages 1-19)	39.1/100,000 youth 1-19, 1994-96				39.2%	23.8/100,000 youth 1-19, 2003-05	7
ECONOMIC CLUSTER							
	42 Economic Index, 1994-96	-45.2%				61 Economic Index, 2003-05	9

■ state change

■ county change

= zero base - cannot calculate change

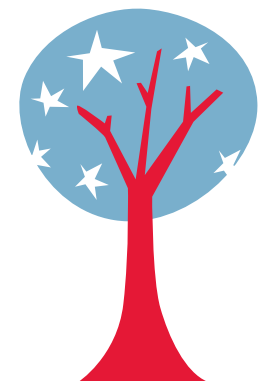
County Rank (1 = best) (77 = worst)

Changes of more than 100%—positive or negative—are graphed with broken bar

*Indicates a tie with at least one other county.

CHILDHOOD STRESS INDEX

Category / Indicator	Number	Rate	Rank
BIRTH / GENETIC / BIOLOGICAL			
Very Low Birthweight (2003-05)	1 avg annual	1.3%	54
Autism Reported on IEPs (ages 3-21, FFY 2005-07)	2 avg annual	1.5/1,000	40
ENVIRONMENTAL FACTORS			
Poverty (ages 0-17, 2004)	198	15.4%	10*
Unemployment (2003-05)	n/a	3.5%	14
EXPOSURE TO TRAUMA			
FEMA Disaster Declarations (Nov 2000-Aug 2007)	6	0.2/1,000 children	14
Adverse Childhood Experiences (ACE Index, 2006/07 Kids Count)	9.3	n/a	3*
ACCESS TO TREATMENT			
Untreated by DMHSAS, OJA or Medicaid (ages 9-17, FY 2005-06)			
Untreated Mentally Ill & Substance-Abusers	134 avg annual	87.1%	76*
Untreated Serious Emotional Disturbance	78 avg annual	81.3%	
Suicide (ages 5-24, 2003-05)	0 avg annual	0.0/100,000	1*



Childhood Stress Rank

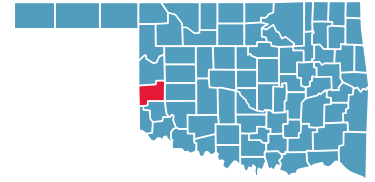
tie for 11

*Indicates a tie with at least one other county.

0.0%* or 0* indicates that, on average, services were provided to numbers of young clients which appear to serve all of the estimated need (prevalence) in the county

BECKHAM COUNTY

County Seat: Sayre



Number of Children (2005): 4,574

Number of Poor Children (2004): 954

Children are 24.2% of the county population

Child Poverty Rate: 21.0%

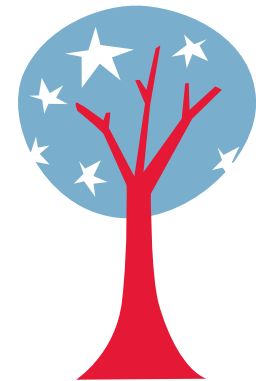
Economic Cluster: #3, Middle

Indicator	Base Data	-	Worsened	Improved	+	Recent Data	Rank
BIRTHWEIGHT							
Low Birthweight (<5.5lbs)	6.6% of live births, 1994-96	-39.9%				9.2% of live births, 2003-05	71
Very Low Birthweight (<3 lbs, 5oz)	0.8% of live births, 1994-96				18.8%	0.7% of live births, 2003-05	13
BIRTHS TO TEENS							
Births to Young Teens (ages 15-17)	27.1/1,000 girls 15-17, 1994-96	-7.6%				29.1/1,000 girls 15-17, 2003-05	42
Births to Older Teens (ages 18-19)	134.6/1,000 girls 18-19, 1994-96	-13.1%				152.2/1,000 girls 18-19, 2003-05	74
Births to Teens (ages 15-19)	63.2/1,000 girls 15-19, 1994-96	-15.9%				73.2/1,000 girls 15-19, 2003-05	70
CHILD ABUSE & NEGLECT							
	25.6 confirmed/1,000 children, FY 1995-97	-3.8%				26.6 confirmed/1,000 children, FY 2004-06	68
HIGH SCHOOL DROPOUTS							
	4.2% youth <age 19, SY 2001/02-2003/04	-31.8%				5.5% youth <age 19, SY 2003/04-2005/06	75
VIOLENT CRIME ARRESTS							
	101.2/100,000 youths 10-17, 1994-96				3.1%	98.0/100,000 youths 10-17, 2003-05	32
MORTALITY							
Infant Mortality (<age 1)	9.8/1,000 live births, 1994-96				65.2%	3.4/1,000 live births, 2003-05	9
Child Death (ages 1-14)	38.2/100,000 children 1-14, 1994-96				24.4%	28.9/100,000 children 1-14, 2003-05	38
Teen Death (ages 15-19)	95.9/100,000 teens 15-19, 1994-96				46.2%	51.6/100,000 teens 15-19, 2003-05	14
Child & Teen Death (ages 1-19)	52.1/100,000 youth 1-19, 1994-96				32.8%	35.0/100,000 youth 1-19, 2003-05	14
ECONOMIC CLUSTER							
	191 Economic Index, 1994-96				25.7%	142 Economic Index, 2003-05	34

■ state change ■ county change ### = zero base - cannot calculate change County Rank (1 = best) (77 = worst)
 Changes of more than 100%—positive or negative—are graphed with broken bar *Indicates a tie with at least one other county.

CHILDHOOD STRESS INDEX

Category / Indicator	Number	Rate	Rank
BIRTH / GENETIC / BIOLOGICAL			
Very Low Birthweight (2003-05)	2 avg annual	0.7%	13
Autism Reported on IEPs (ages 3-21, FFY 2005-07)	7 avg annual	1.6/1,000	44
ENVIRONMENTAL FACTORS			
Poverty (ages 0-17, 2004)	954	21.0%	38*
Unemployment (2003-05)	n/a	3.1%	5
EXPOSURE TO TRAUMA			
FEMA Disaster Declarations (Nov 2000-Aug 2007)	7	0.7/1,000 children	40
Adverse Childhood Experiences (ACE Index, 2006/07 Kids Count)	48.5	n/a	65
ACCESS TO TREATMENT			
Untreated by DMHSAS, OJA or Medicaid (ages 9-17, FY 2005-06)			
Untreated Mentally Ill & Substance-Abusers	129 avg annual	27.6%	2
Untreated Serious Emotional Disturbance	0* avg annual	0.0%*	
Suicide (ages 5-24, 2003-05)	1 avg annual	19.8/100,000	74



Childhood Stress Rank

16

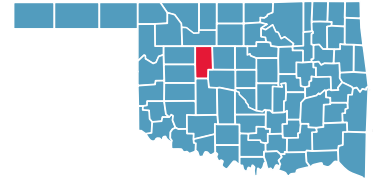
*Indicates a tie with at least one other county.

0.0%* or 0* indicates that, on average, services were provided to numbers of young clients which appear to serve all of the estimated need (prevalence) in the county



BLAINE COUNTY

County Seat: **Watonga**



Number of Children (2005): **2,520**

Number of Poor Children (2004): **541**

Children are **19.6%** of the county population

Child Poverty Rate: **21.6%**

Economic Cluster: **#5, Poorest**

Indicator	Base Data	-	Worsened	Improved	+	Recent Data	Rank
BIRTHWEIGHT							
Low Birthweight (<5.5lbs)	6.2% of live births, 1994-96	-41.5%				8.7% of live births, 2003-05	64
Very Low Birthweight (<3 lbs, 5oz)	2.0% of live births, 1994-96				32.3%	1.3% of live births, 2003-05	56
BIRTHS TO TEENS							
Births to Young Teens (ages 15-17)	33.4/1,000 girls 15-17, 1994-96				0.1%	33.3/1,000 girls 15-17, 2003-05	55
Births to Older Teens (ages 18-19)	156.4/1,000 girls 18-19, 1994-96				24.2%	118.6/1,000 girls 18-19, 2003-05	59
Births to Teens (ages 15-19)	75.5/1,000 girls 15-19, 1994-96				12.6%	66.0/1,000 girls 15-19, 2003-05	55
CHILD ABUSE & NEGLECT	21.1 confirmed/1,000 children, FY 1995-97	-13.1%				23.8 confirmed/1,000 children, FY 2004-06	58
HIGH SCHOOL DROPOUTS	0.5% youth <age 19, SY 2001/02-2003/04	-54.2%				0.8% youth <age 19, SY 2003/04-2005/06	5
VIOLENT CRIME ARRESTS	152.0/100,000 youths 10-17, 1994-96				48.0%	79.1/100,000 youths 10-17, 2003-05	23
MORTALITY							
Infant Mortality (<age 1)	13.2/1,000 live births, 1994-96				49.2%	6.7/1,000 live births, 2003-05	32
Child Death (ages 1-14)	28.2/100,000 children 1-14, 1994-96	-22.7%				34.6/100,000 children 1-14, 2003-05	49
Teen Death (ages 15-19)	87.6/100,000 teens 15-19, 1994-96	-33.2%				116.7/100,000 teens 15-19, 2003-05	53
Child & Teen Death (ages 1-19)	42.7/100,000 youth 1-19, 1994-96	-40.3%				59.9/100,000 youth 1-19, 2003-05	51
ECONOMIC CLUSTER	185 Economic Index, 1994-96	-12.4%				208 Economic Index, 2003-05	55*

■ state change

■ county change

= zero base - cannot calculate change

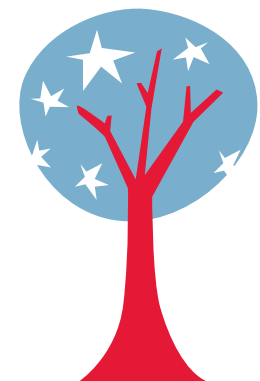
County Rank (1 = best) (77 = worst)

Changes of more than 100%—positive or negative—are graphed with broken bar

*Indicates a tie with at least one other county.

CHILDHOOD STRESS INDEX

Category / Indicator	Number	Rate	Rank
BIRTH / GENETIC / BIOLOGICAL			
Very Low Birthweight (2003-05)	2 avg annual	1.3%	56
Autism Reported on IEPs (ages 3-21, FFY 2005-07)	5 avg annual	1.7/1,000	47
ENVIRONMENTAL FACTORS			
Poverty (ages 0-17, 2004)	541	21.6%	42
Unemployment (2003-05)	n/a	4.4%	32
EXPOSURE TO TRAUMA			
FEMA Disaster Declarations (Nov 2000-Aug 2007)	9	0.3/1,000 children	20
Adverse Childhood Experiences (ACE Index, 2006/07 Kids Count)	35.8	n/a	44
ACCESS TO TREATMENT			
Untreated by DMHSAS, OJA or Medicaid (ages 9-17, FY 2005-06)			
Untreated Mentally Ill & Substance-Abusers	87 avg annual	30.9%	6
Untreated Serious Emotional Disturbance	0* avg annual	0.0%*	
Suicide (ages 5-24, 2003-05)	0 avg annual	9.9/100,000	55



Childhood Stress Rank

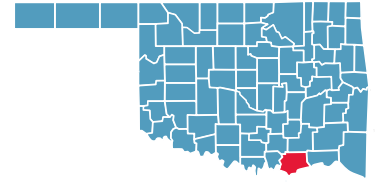
17

*Indicates a tie with at least one other county.

0.0%* or 0* indicates that, on average, services were provided to numbers of young clients which appear to serve all of the estimated need (prevalence) in the county

BRYAN COUNTY

County Seat: Durant



Number of Children (2005): 8,732

Number of Poor Children (2004): 2,069

Children are 23.1% of the county population

Child Poverty Rate: 23.8%

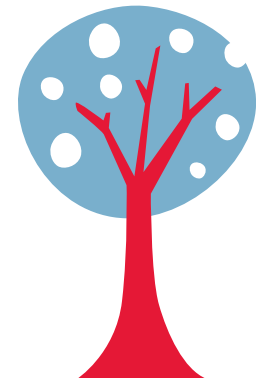
Economic Cluster: #3, Middle

Indicator	Base Data	-	Worsened	Improved	+	Recent Data	Rank
BIRTHWEIGHT							
Low Birthweight (<5.5lbs)	7.0% of live births, 1994-96					4.4%	6.7% of live births, 2003-05 18
Very Low Birthweight (<3 lbs, 5oz)	0.6% of live births, 1994-96	-166.6%				1.6% of live births, 2003-05	66
BIRTHS TO TEENS							
Births to Young Teens (ages 15-17)	33.8/1,000 girls 15-17, 1994-96	-5.8%				35.7/1,000 girls 15-17, 2003-05	60
Births to Older Teens (ages 18-19)	108.0/1,000 girls 18-19, 1994-96				4.4%	103.3/1,000 girls 18-19, 2003-05	40
Births to Teens (ages 15-19)	65.8/1,000 girls 15-19, 1994-96				2.7%	64/1,000 girls 15-19, 2003-05	53
CHILD ABUSE & NEGLECT							
	10.5 confirmed/1,000 children, FY 1995-97	-189.2%				30.3 confirmed/1,000 children, FY 2004-06	74
HIGH SCHOOL DROPOUTS							
	4.4% youth <age 19, SY 2001/02-2003/04				22.3%	3.5% youth <age 19, SY 2003/04-2005/06	58
VIOLENT CRIME ARRESTS							
	96.3/100,000 youths 10-17, 1994-96	-53.1%				147.4/100,000 youths 10-17, 2003-05	50
MORTALITY							
Infant Mortality (<age 1)	6.9/1,000 live births, 1994-96	-70.6%				11.7/1,000 live births, 2003-05	67
Child Death (ages 1-14)	45.9/100,000 children 1-14, 1994-96				35.6%	29.6/100,000 children 1-14, 2003-05	41
Teen Death (ages 15-19)	71.8/100,000 teens 15-19, 1994-96	-71.7%				123.4/100,000 teens 15-19, 2003-05	54
Child & Teen Death (ages 1-19)	53.7/100,000 youth 1-19, 1994-96	-5.0%				56.4/100,000 youth 1-19, 2003-05	44
ECONOMIC CLUSTER							
	171 Economic Index, 1994-96				12.3%	150 Economic Index, 2003-05	39

■ state change ■ county change ### = zero base - cannot calculate change County Rank (1 = best) (77 = worst)
 Changes of more than 100%—positive or negative—are graphed with broken bar *Indicates a tie with at least one other county.

CHILDHOOD STRESS INDEX

Category / Indicator	Number	Rate	Rank
BIRTH / GENETIC / BIOLOGICAL			
Very Low Birthweight (2003-05)	8 avg annual	1.6%	66
Autism Reported on IEPs (ages 3-21, FFY 2005-07)	16 avg annual	1.7/1,000	46
ENVIRONMENTAL FACTORS			
Poverty (ages 0-17, 2004)	2,069	23.8%	51
Unemployment (2003-05)	n/a	3.8%	21
EXPOSURE TO TRAUMA			
FEMA Disaster Declarations (Nov 2000-Aug 2007)	9	1.0/1,000 children	50
Adverse Childhood Experiences (ACE Index, 2006/07 Kids Count)	55.8	n/a	72
ACCESS TO TREATMENT			
Untreated by DMHSAS, OJA or Medicaid (ages 9-17, FY 2005-06)			
Untreated Mentally Ill & Substance-Abusers	288 avg annual	30.8%	3
Untreated Serious Emotional Disturbance	0* avg annual	0.0%*	
Suicide (ages 5-24, 2003-05)	1 avg annual	12.5/100,000	67



Childhood Stress Rank

56

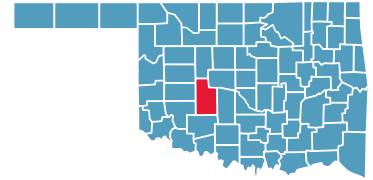
*Indicates a tie with at least one other county.

0.0%* or 0* indicates that, on average, services were provided to numbers of young clients which appear to serve all of the estimated need (prevalence) in the county



CADDO COUNTY

County Seat: Anadarko



Number of Children (2005): 7,823

Number of Poor Children (2004): 2,018

Children are 25.9% of the county population

Child Poverty Rate: 26.2%

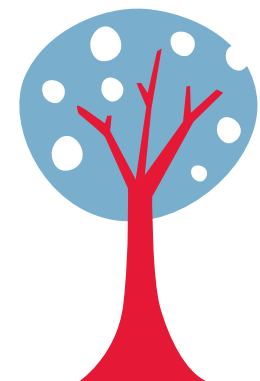
Economic Cluster: #5, Poorest

Indicator	Base Data	-	Worsened	Improved	+	Recent Data	Rank
BIRTHWEIGHT							
Low Birthweight (<5.5lbs)	6.7% of live births, 1994-96	-19.0%				8.0% of live births, 2003-05	49
Very Low Birthweight (<3 lbs, 5oz)	0.5% of live births, 1994-96	-266.8%				1.8% of live births, 2003-05	71
BIRTHS TO TEENS							
Births to Young Teens (ages 15-17)	51.6/1,000 girls 15-17, 1994-96				36.2%	32.9/1,000 girls 15-17, 2003-05	54
Births to Older Teens (ages 18-19)	134.7/1,000 girls 18-19, 1994-96				15.5%	113.8/1,000 girls 18-19, 2003-05	48
Births to Teens (ages 15-19)	80.2/1,000 girls 15-19, 1994-96				22.9%	61.8/1,000 girls 15-19, 2003-05	45
CHILD ABUSE & NEGLECT							
	25.4 confirmed/1,000 children, FY 1995-97				51.2%	12.4 confirmed/1,000 children, FY 2004-06	21
HIGH SCHOOL DROPOUTS							
	2.7% youth <age 19, SY 2001/02-2003/04	-18.1%				3.1% youth <age 19, SY 2003/04-2005/06	48
VIOLENT CRIME ARRESTS							
	227.4/100,000 youths 10-17, 1994-96	-33.8%				304.3/100,000 youths 10-17, 2003-05	73
MORTALITY							
Infant Mortality (<age 1)	6.5/1,000 live births, 1994-96	-7.7%				7.0/1,000 live births, 2003-05	37
Child Death (ages 1-14)	30.0/100,000 children 1-14, 1994-96	-69.0%				50.7/100,000 children 1-14, 2003-05	64
Teen Death (ages 15-19)	269.2/100,000 teens 15-19, 1994-96				70.7%	78.9/100,000 teens 15-19, 2003-05	32
Child & Teen Death (ages 1-19)	92.4/100,000 youth 1-19, 1994-96				36.0%	59.1/100,000 youth 1-19, 2003-05	47
ECONOMIC CLUSTER							
	239 Economic Index, 1994-96	-5.4%				252 Economic Index, 2003-05	68*

■ state change ■ county change ### = zero base - cannot calculate change County Rank (1 = best) (77 = worst)
 Changes of more than 100%—positive or negative—are graphed with broken bar *Indicates a tie with at least one other county.

CHILDHOOD STRESS INDEX

Category / Indicator	Number	Rate	Rank
BIRTH / GENETIC / BIOLOGICAL			
Very Low Birthweight (2003-05)	8 avg annual	1.8%	71
Autism Reported on IEPs (ages 3-21, FFY 2005-07)	10 avg annual	1.3/1,000	26
ENVIRONMENTAL FACTORS			
Poverty (ages 0-17, 2004)	2,018	26.2%	65
Unemployment (2003-05)	n/a	5.5%	50
EXPOSURE TO TRAUMA			
FEMA Disaster Declarations (Nov 2000-Aug 2007)	12	0.7/1,000 children	39
Adverse Childhood Experiences (ACE Index, 2006/07 Kids Count)	23.0	n/a	12
ACCESS TO TREATMENT			
Untreated by DMHSAS, OJA or Medicaid (ages 9-17, FY 2005-06)			
Untreated Mentally Ill & Substance-Abusers	580 avg annual	66.4%	59*
Untreated Serious Emotional Disturbance	275 avg annual	50.6%	
Suicide (ages 5-24, 2003-05)	0 avg annual	3.8/100,000	32



Childhood Stress Rank

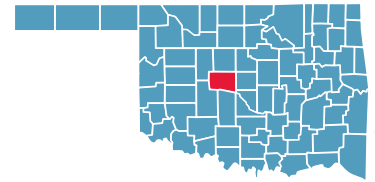
65

*Indicates a tie with at least one other county.

0.0%* or 0* indicates that, on average, services were provided to numbers of young clients which appear to serve all of the estimated need (prevalence) in the county

CANADIAN COUNTY

County Seat: **El Reno**



Number of Children (2005): **23,600**

Number of Poor Children (2004): **2,811**

Children are **23.9%** of the county population

Child Poverty Rate: **11.9%**

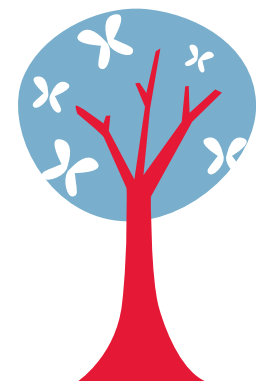
Economic Cluster: **#1, Wealthiest**

Indicator	Base Data	-	Worsened	Improved	+	Recent Data	Rank
BIRTHWEIGHT							
Low Birthweight (<5.5lbs)	4.7% of live births, 1994-96	-55.0%				7.4% of live births, 2003-05	34
Very Low Birthweight (<3 lbs, 5oz)	0.4% of live births, 1994-96	-151.3%				1.1% of live births, 2003-05	38
BIRTHS TO TEENS							
Births to Young Teens (ages 15-17)	24.4/1,000 girls 15-17, 1994-96				39.1%	14.8/1,000 girls 15-17, 2003-05	10
Births to Older Teens (ages 18-19)	71.7/1,000 girls 18-19, 1994-96				11.1%	63.7/1,000 girls 18-19, 2003-05	13
Births to Teens (ages 15-19)	40.1/1,000 girls 15-19, 1994-96				16.5%	33.5/1,000 girls 15-19, 2003-05	10
CHILD ABUSE & NEGLECT	13.1 confirmed/1,000 children, FY 1995-97	-6.8%				13.9 confirmed/1,000 children, FY 2004-06	27
HIGH SCHOOL DROPOUTS	3.3% youth <age 19, SY 2001/02-2003/04				18.1%	2.7% youth <age 19, SY 2003/04-2005/06	42
VIOLENT CRIME ARRESTS	146.8/100,000 youths 10-17, 1994-96				31.3%	100.9/100,000 youths 10-17, 2003-05	34
MORTALITY							
Infant Mortality (<age 1)	3.7/1,000 live births, 1994-96	-126.3%				8.3/1,000 live births, 2003-05	50
Child Death (ages 1-14)	13.9/100,000 children 1-14, 1994-96	-61.0%				22.4/100,000 children 1-14, 2003-05	26
Teen Death (ages 15-19)	90.1/100,000 teens 15-19, 1994-96				74.9%	22.6/100,000 teens 15-19, 2003-05	5
Child & Teen Death (ages 1-19)	32.7/100,000 youth 1-19, 1994-96				31.4%	22.4/100,000 youth 1-19, 2003-05	5
ECONOMIC CLUSTER	26 Economic Index, 1994-96	-165.4%				69 Economic Index, 2003-05	12

■ state change ■ county change ### = zero base - cannot calculate change County Rank (1 = best) (77 = worst)
 Changes of more than 100%—positive or negative—are graphed with broken bar *Indicates a tie with at least one other county.

CHILDHOOD STRESS INDEX

Category / Indicator	Number	Rate	Rank
BIRTH / GENETIC / BIOLOGICAL			
Very Low Birthweight (2003-05)	14 avg annual	1.1%	38
Autism Reported on IEPs (ages 3-21, FFY 2005-07)	48 avg annual	1.9/1,000	55
ENVIRONMENTAL FACTORS			
Poverty (ages 0-17, 2004)	2,811	11.9%	1
Unemployment (2003-05)	n/a	3.9%	23*
EXPOSURE TO TRAUMA			
FEMA Disaster Declarations (Nov 2000-Aug 2007)	11	2.1/1,000 children	70
Adverse Childhood Experiences (ACE Index, 2006/07 Kids Count)	28.2	n/a	23
ACCESS TO TREATMENT			
Untreated by DMHSAS, OJA or Medicaid (ages 9-17, FY 2005-06)			
Untreated Mentally Ill & Substance-Abusers	1,996 avg annual	74.7%	72
Untreated Serious Emotional Disturbance	1,038 avg annual	62.4%	
Suicide (ages 5-24, 2003-05)	2 avg annual	5.9/100,000	41



Childhood Stress Rank

27

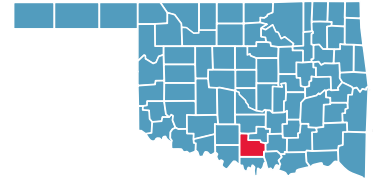
*Indicates a tie with at least one other county.

0.0%* or 0* indicates that, on average, services were provided to numbers of young clients which appear to serve all of the estimated need (prevalence) in the county



CARTER COUNTY

County Seat: Ardmore



Number of Children (2005): 11,372

Number of Poor Children (2004): 2,471

Children are 24.1% of the county population

Child Poverty Rate: 21.9%

Economic Cluster: #3, Middle

Indicator	Base Data	-	Worsened	Improved	+	Recent Data	Rank
BIRTHWEIGHT							
Low Birthweight (<5.5lbs)	7.8% of live births, 1994-96	-7.0%				8.4% of live births, 2003-05	56
Very Low Birthweight (<3 lbs, 5oz)	1.0% of live births, 1994-96	-15.9%				1.1% of live births, 2003-05	41
BIRTHS TO TEENS							
Births to Young Teens (ages 15-17)	43.6/1,000 girls 15-17, 1994-96				22.0%	34.0/1,000 girls 15-17, 2003-05	59
Births to Older Teens (ages 18-19)	161.0/1,000 girls 18-19, 1994-96				19.9%	129.1/1,000 girls 18-19, 2003-05	65
Births to Teens (ages 15-19)	82.0/1,000 girls 15-19, 1994-96				16.2%	68.7/1,000 girls 15-19, 2003-05	62
CHILD ABUSE & NEGLECT	15.9 confirmed/1,000 children, FY 1995-97	-70.9%				27.2 confirmed/1,000 children, FY 2004-06	69
HIGH SCHOOL DROPOUTS	3.5% youth <age 19, SY 2001/02-2003/04	-37.8%				4.9% youth <age 19, SY 2003/04-2005/06	73
VIOLENT CRIME ARRESTS	261.3/100,000 youths 10-17, 1994-96				47.1%	138.3/100,000 youths 10-17, 2003-05	46
MORTALITY							
Infant Mortality (<age 1)	7.9/1,000 live births, 1994-96				16.8%	6.6/1,000 live births, 2003-05	29
Child Death (ages 1-14)	50.3/100,000 children 1-14, 1994-96				55.0%	22.6/100,000 children 1-14, 2003-05	27
Teen Death (ages 15-19)	103.3/100,000 teens 15-19, 1994-96	-29.9%				134.2/100,000 teens 15-19, 2003-05	60
Child & Teen Death (ages 1-19)	64.0/100,000 youth 1-19, 1994-96				18.0%	52.5/100,000 youth 1-19, 2003-05	43
ECONOMIC CLUSTER	166 Economic Index, 1994-96				12.7%	145 Economic Index, 2003-05	36*

■ state change

■ county change

= zero base - cannot calculate change

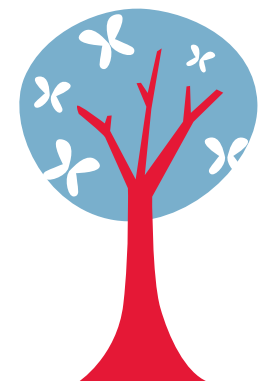
County Rank (1 = best) (77 = worst)

Changes of more than 100%—positive or negative—are graphed with broken bar

*Indicates a tie with at least one other county.

CHILDHOOD STRESS INDEX

Category / Indicator	Number	Rate	Rank
BIRTH / GENETIC / BIOLOGICAL			
Very Low Birthweight (2003-05)	7 avg annual	1.1%	41
Autism Reported on IEPs (ages 3-21, FFY 2005-07)	16 avg annual	1.4/1,000	36
ENVIRONMENTAL FACTORS			
Poverty (ages 0-17, 2004)	2,471	21.9%	43*
Unemployment (2003-05)	n/a	4.5%	33*
EXPOSURE TO TRAUMA			
FEMA Disaster Declarations (Nov 2000-Aug 2007)	8	1.4/1,000 children	60
Adverse Childhood Experiences (ACE Index, 2006/07 Kids Count)	43.6	n/a	59
ACCESS TO TREATMENT			
Untreated by DMHSAS, OJA or Medicaid (ages 9-17, FY 2005-06)			
Untreated Mentally Ill & Substance-Abusers	509 avg annual	42.8%	14
Untreated Serious Emotional Disturbance	85 avg annual	11.5%	
Suicide (ages 5-24, 2003-05)	1 avg annual	5.4/100,000	38



Childhood Stress Rank

tie for 28

*Indicates a tie with at least one other county.

0.0%* or 0* indicates that, on average, services were provided to numbers of young clients which appear to serve all of the estimated need (prevalence) in the county

